

# Room WITH A

# View

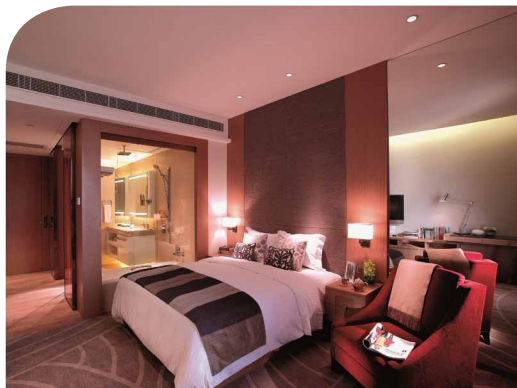
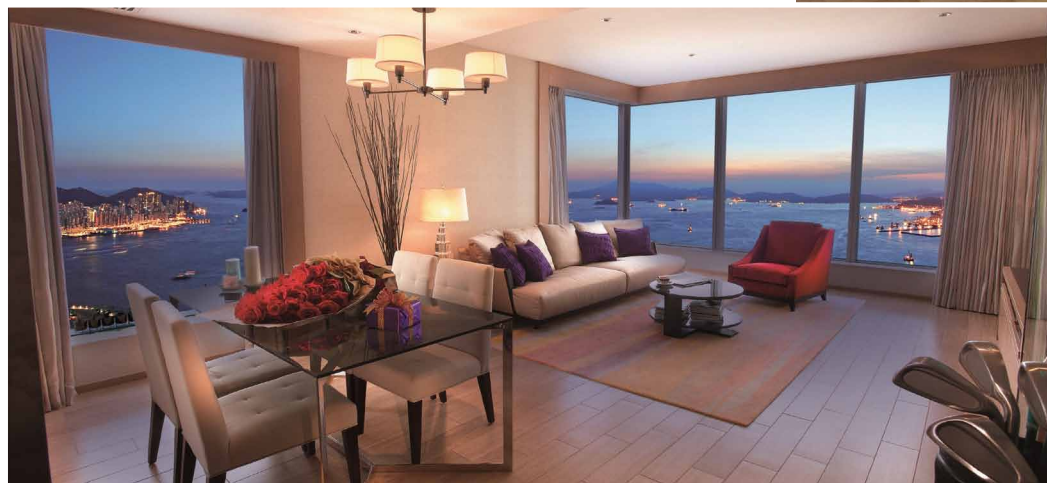
The perfect home away from home, The HarbourView Place, offers a stylish and sophisticated living experience

The HarbourView Place is a true stand out from the crowd, not only because of the one of a kind view it offers, but because of its prime location with superb transportation network which exudes sophistication and style.

To its advantage, The HarbourView Place is Hong Kong's tallest serviced suite hotel, offering new levels of luxury for visitors and expatriates to the city.

Positioned within Kowloon's emerging vivacious eastern hub, The HarbourView Place showcases all that exudes quality within luxury serviced suite hotels, complimented by the stunning skyline across Victoria Harbour with Four Seasons Place on the opposite shore.

The geographical location is also one of the key attractions for guests, with the complex located within a stone's throw from one of



the most extensive and efficient transportation hubs in the world.

Perfectly positioned on the 50th to 70th floors of the Cullinan II, one of the twin towers of the ICC megalopolis, neighbouring The Ritz-Carlton Hong Kong and W Hong Kong, The HarbourView Place is above the MTR/AEL Kowloon Station and is only a three-minute train ride from Central and just a 20 minute ride to Hong Kong International Airport.

The HarbourView Place offers a range of 266 serviced suites, including

studios, studio deluxes, one-bedroom suites, one-bedroom deluxes, two-bedroom suites, three-bedroom suites and presidential suites, ranging from 464 to 3,270 sq.ft., with unbeatable 180 and 270 degree views of the city. Renowned designers have played a key role in creating contemporary interiors, featuring a variety of stylish and comfortable furnishings.

Personalized services and amenities are on offer for guests' convenience, including 24-hour multilingual concierge service, Guests Liaison Specialists,

a heated rooftop pool and jacuzzi on the 76/F, lounge, gymnasium, multi-purpose function room, reading corner with internet access and a Laundromat.

At The HarbourView Place there is a strong focus on guests' immediate needs with staff ensuring that every minor detail has been taken care of. To enhance guests' luxury living experience, extensive in-room provisions include pillow top Sealy mattress, wide screen LCD TV, DVD player, stereo speaker and LCD TV in bathroom, Nespresso coffee maker, washer and

dryer, KEF 5.1 home theatre system with iPod dock and a fully equipped kitchenette, including a microwave oven, refrigerator, induction hob, electric kettle, toaster, glasswares, tablewares and utensils.

Guests Liaison Specialists are on hand to host cultural and social activities, such as heritage walks, coffee cupping classes, floral arranging and Chinese tea appreciation classes. These activities allow guests to get together and learn more about the local traditional culture.

Since a growing number of executives and professionals are relocating to Hong Kong due to the financial industry recovering globally, newly-relocated expatriates find it extremely convenient and comfortable to settle down in the HarbourView Place luxury serviced suites.

Always caring the guests' needs and paying attention to even the smallest of details, The HarbourView Place epitomizes the ultimate luxury living experience, offering guests a hassle-free stay "home away from home" feeling.

THE  
HARBOUR  
VIEW  
PLACE

at the ICC megalopolis

Atop MTR/AEL Kowloon Station, 1 Austin Road West, Kowloon, Hong Kong  
Enquiry: +852 3178 8000  
E-mail: [enquiries@harbourviewplace.com](mailto:enquiries@harbourviewplace.com)  
Website: [www.harbourviewplace.com](http://www.harbourviewplace.com)